



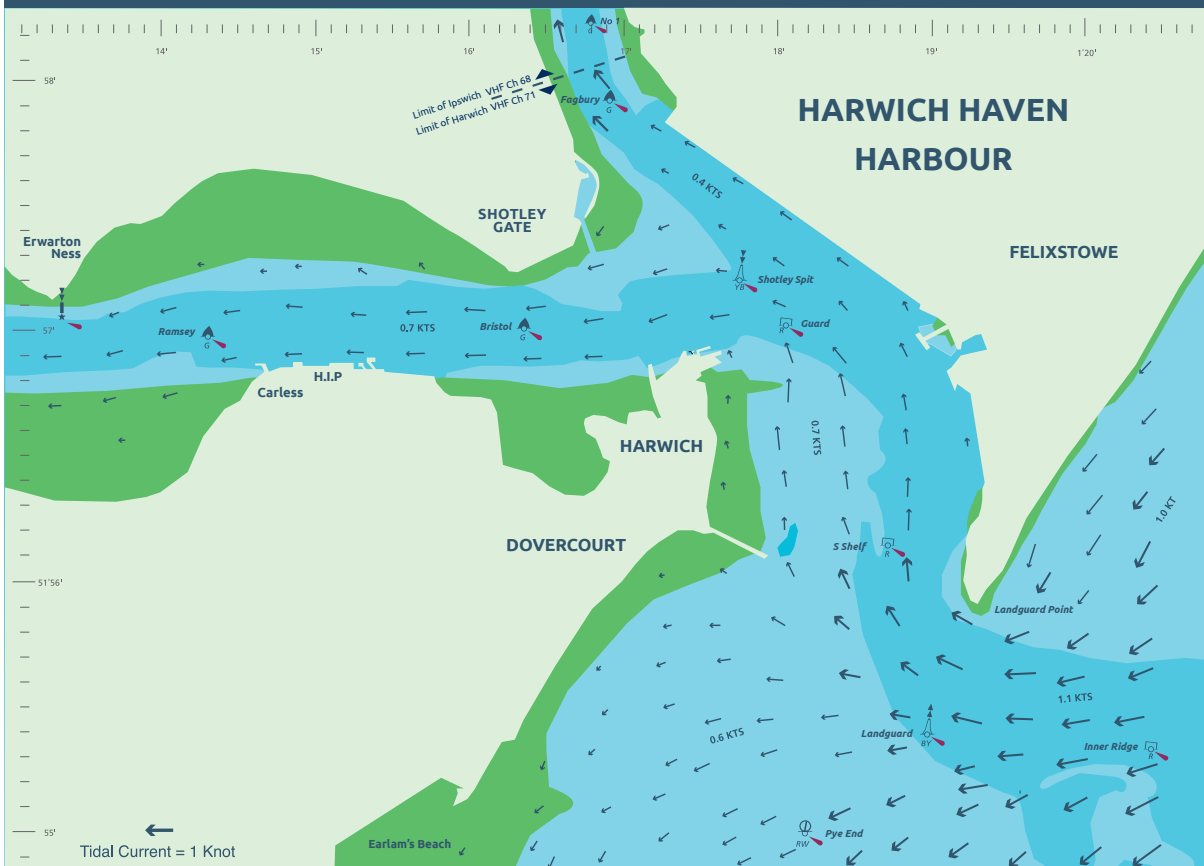
# HIGH WATER HARWICH - 5.00 hours

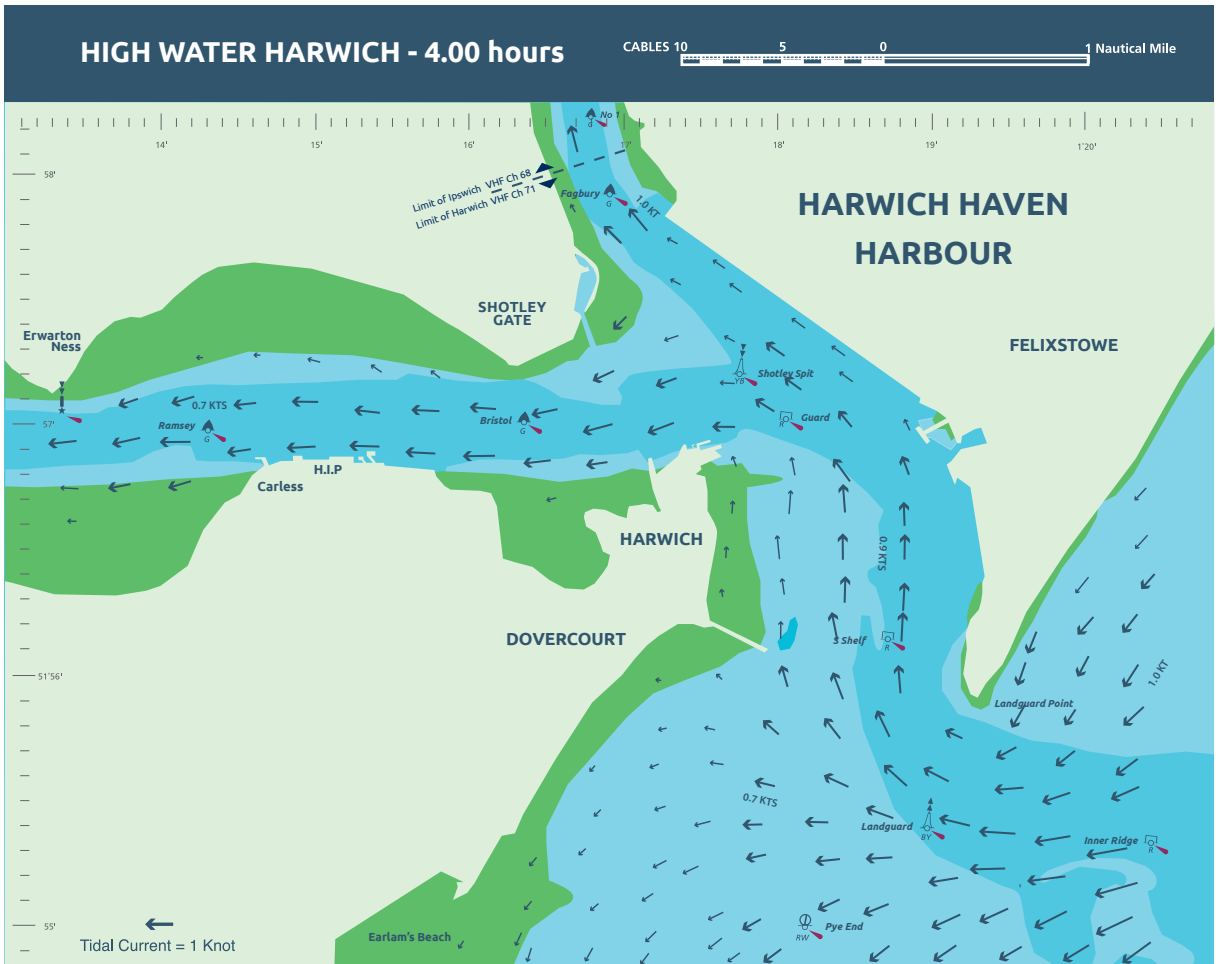
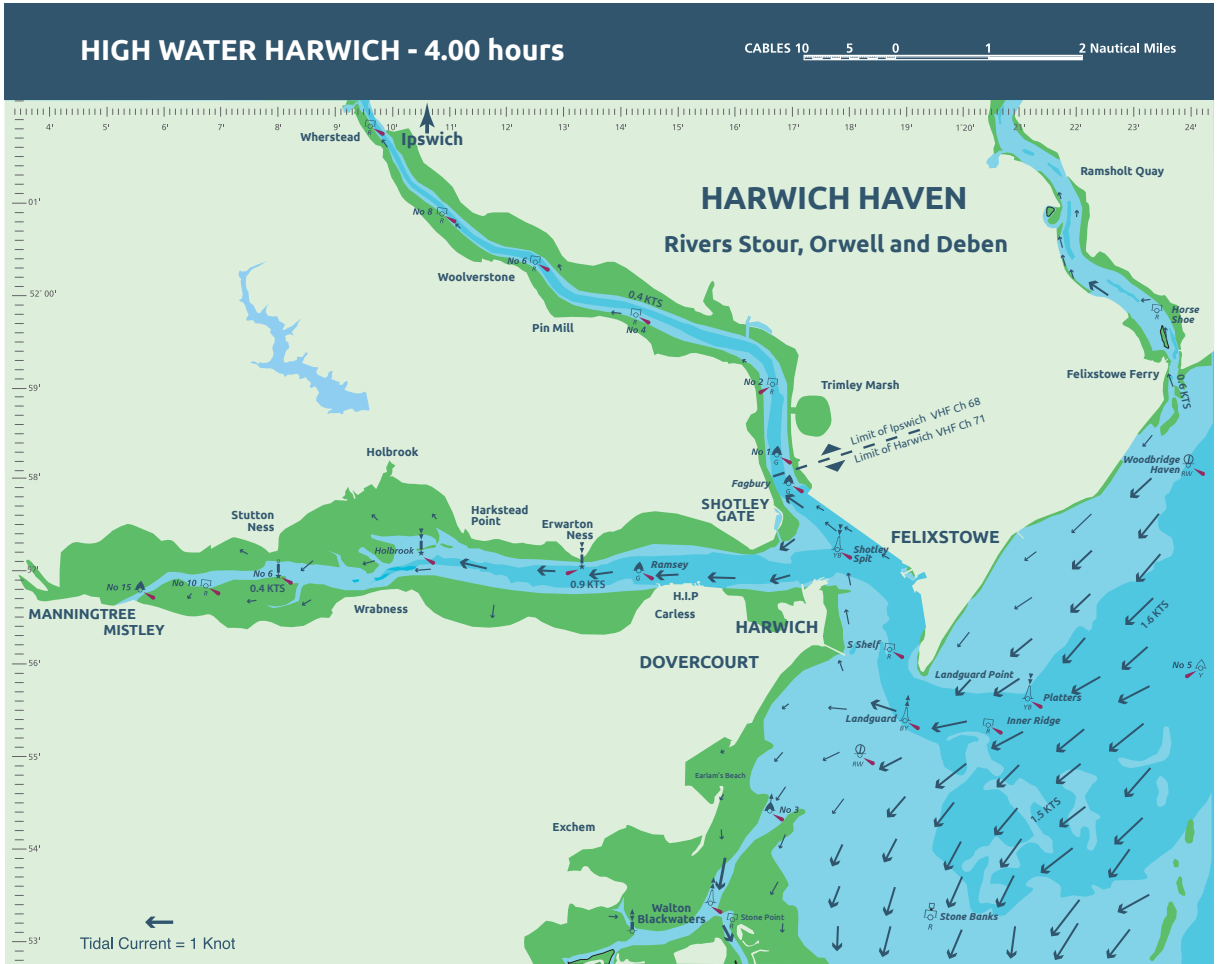
CABLES 10 5 0 1 2 Nautical Miles



# HIGH WATER HARWICH - 5.00 hours

CABLES 10 5 0 1 Nautical Mile







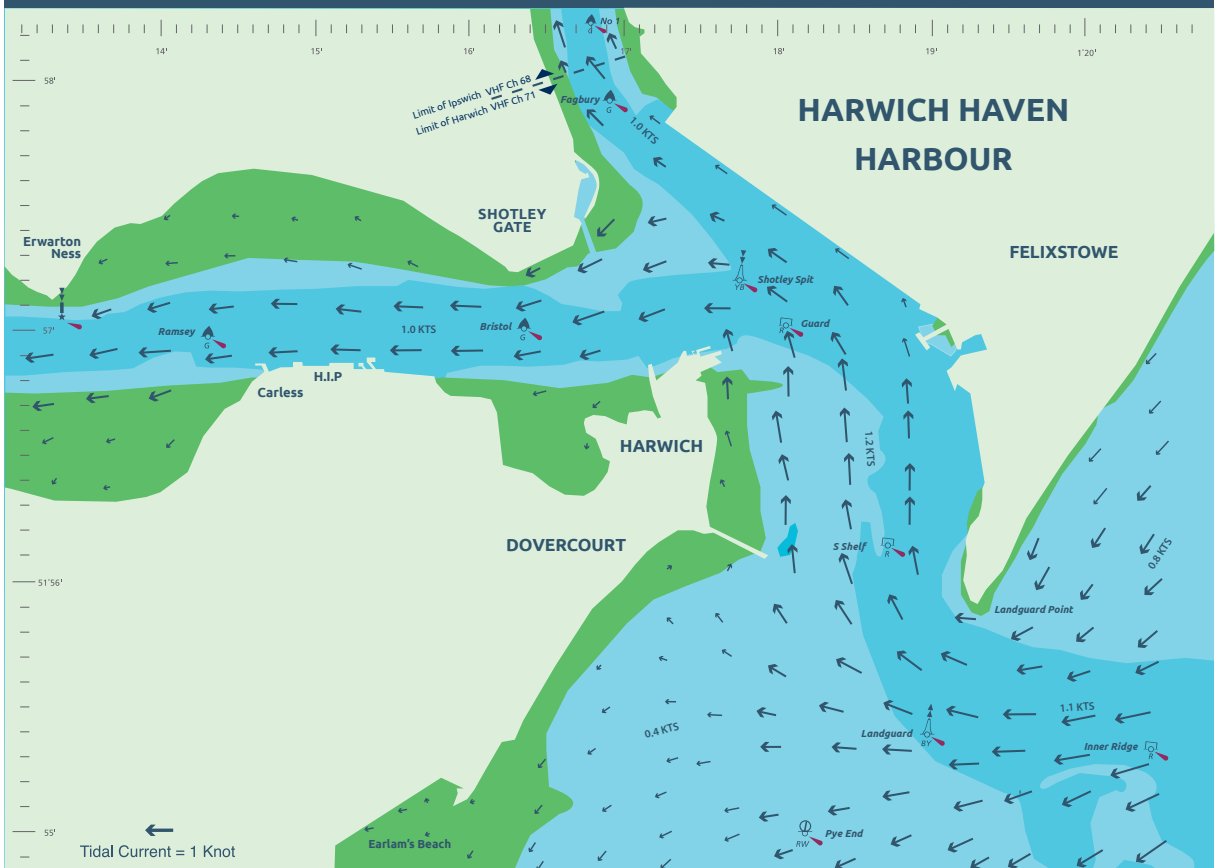
# HIGH WATER HARWICH - 3.00 hours

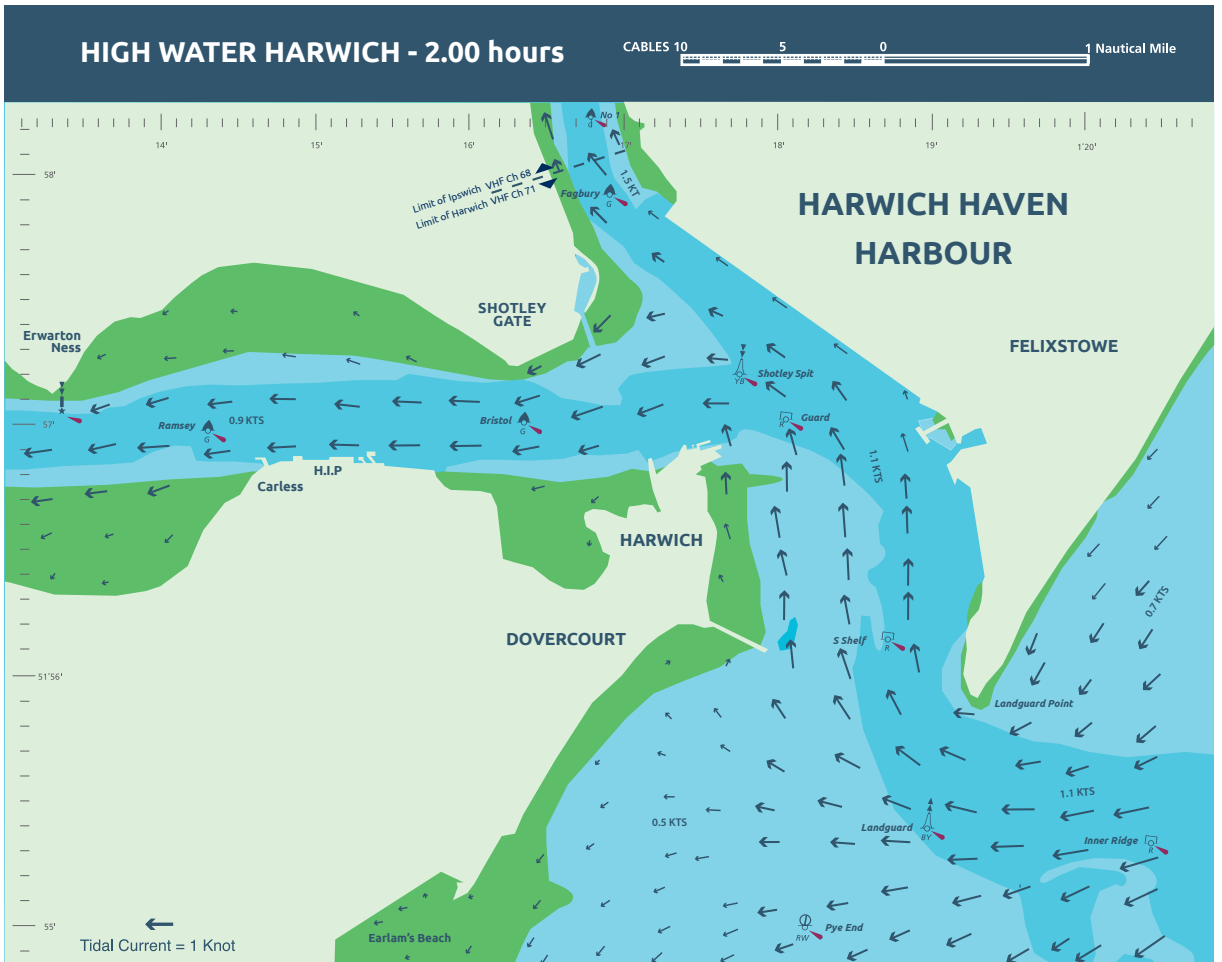
CABLES 10 5 0 1 2 Nautical Miles

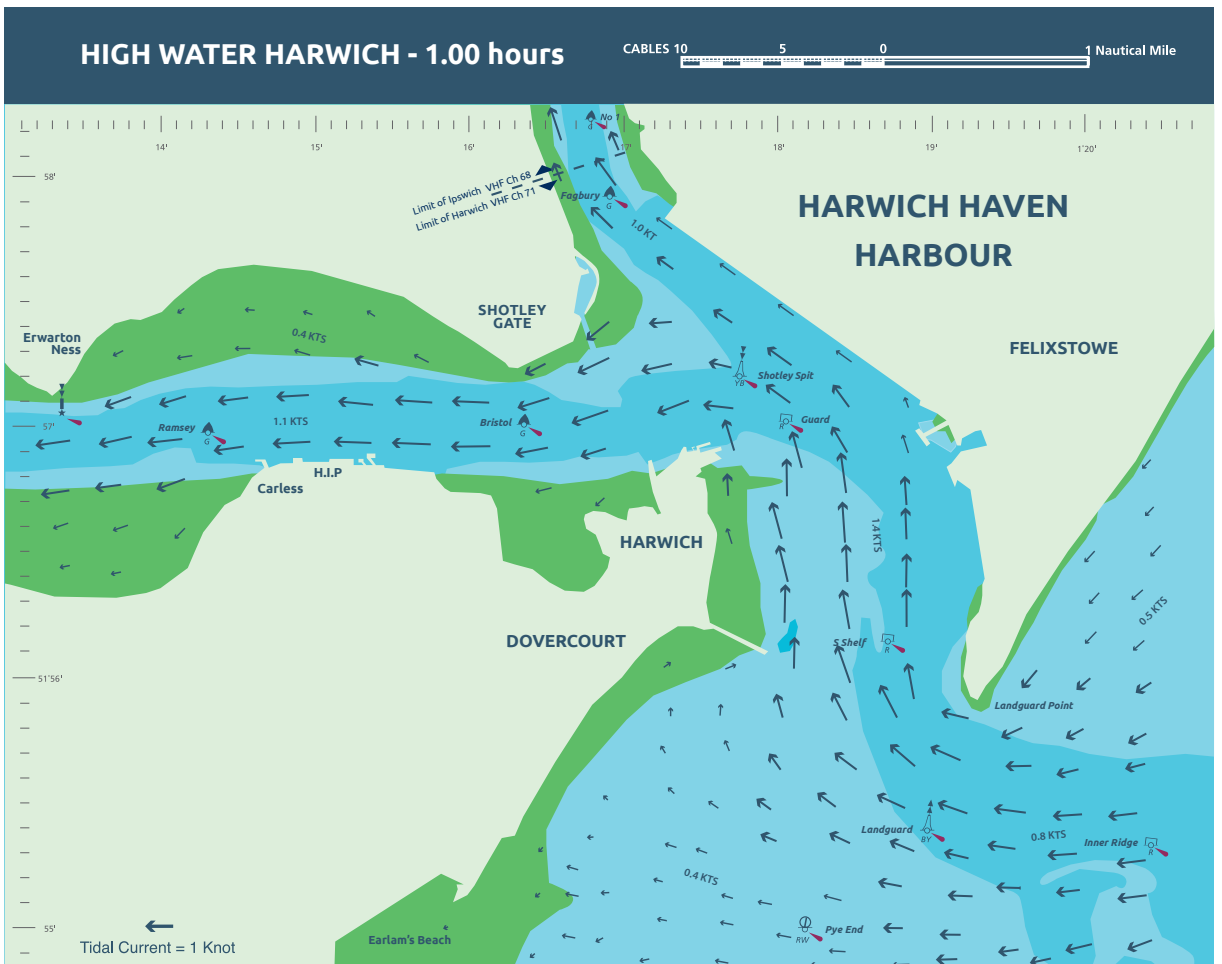
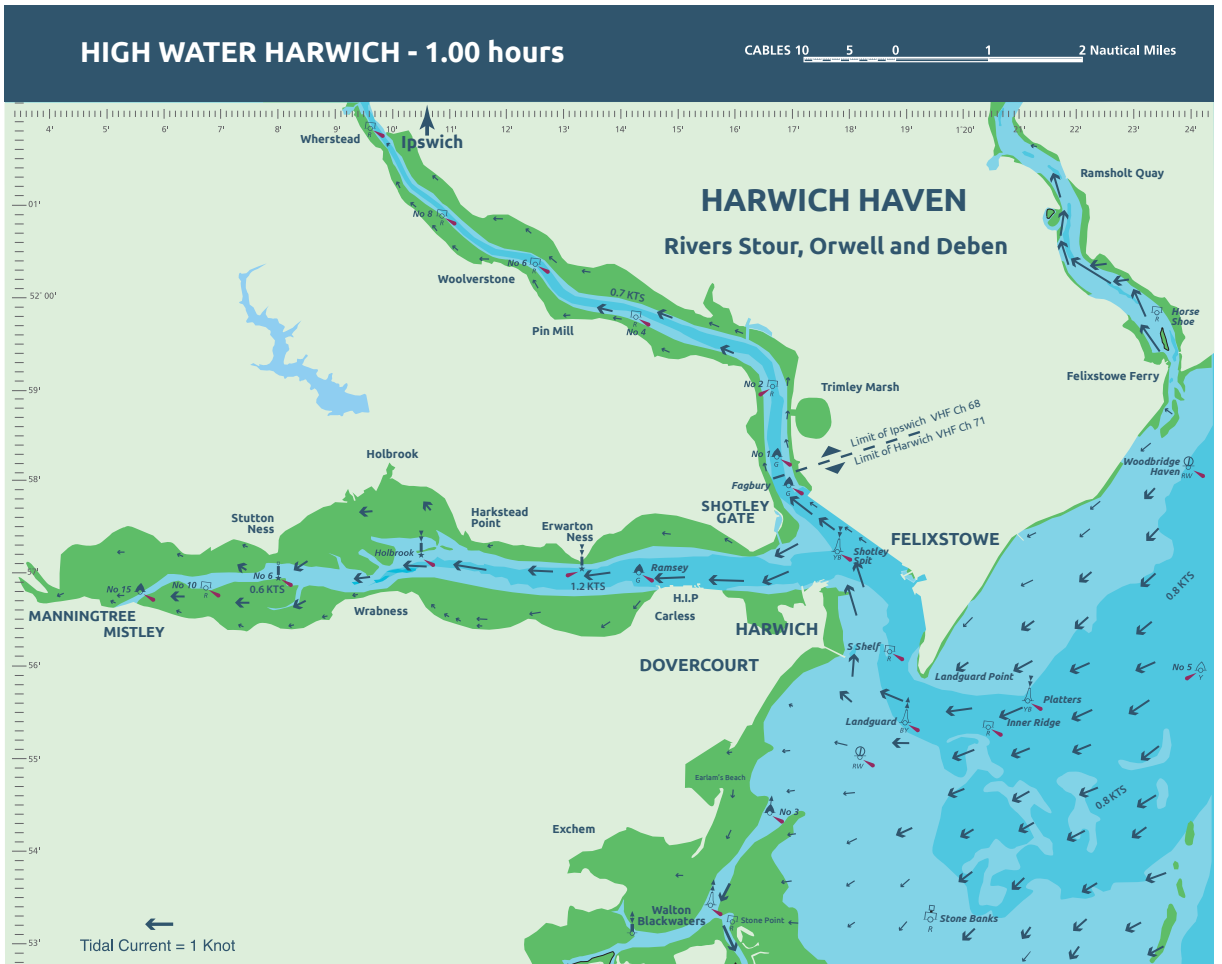


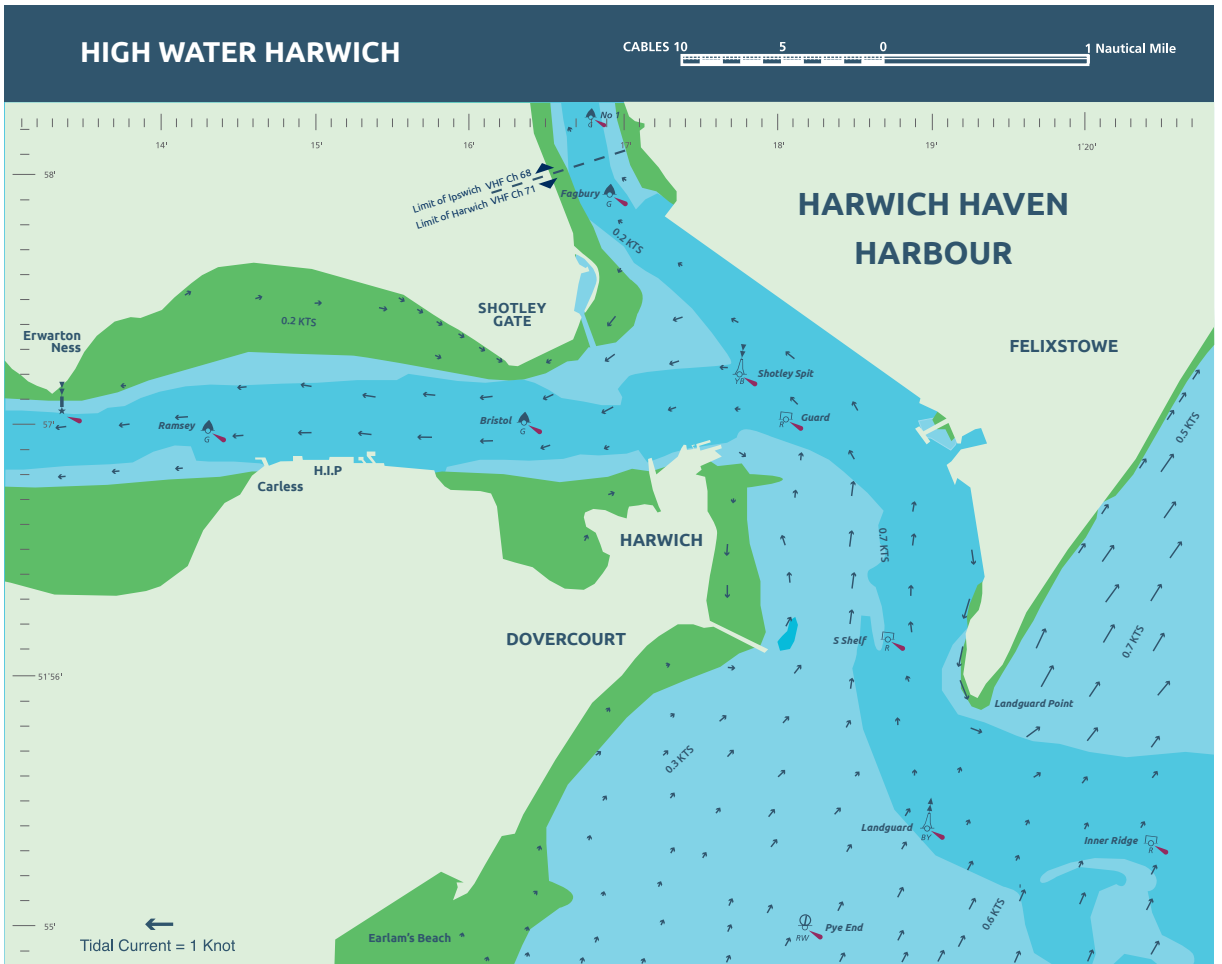
# HIGH WATER HARWICH - 3.00 hours

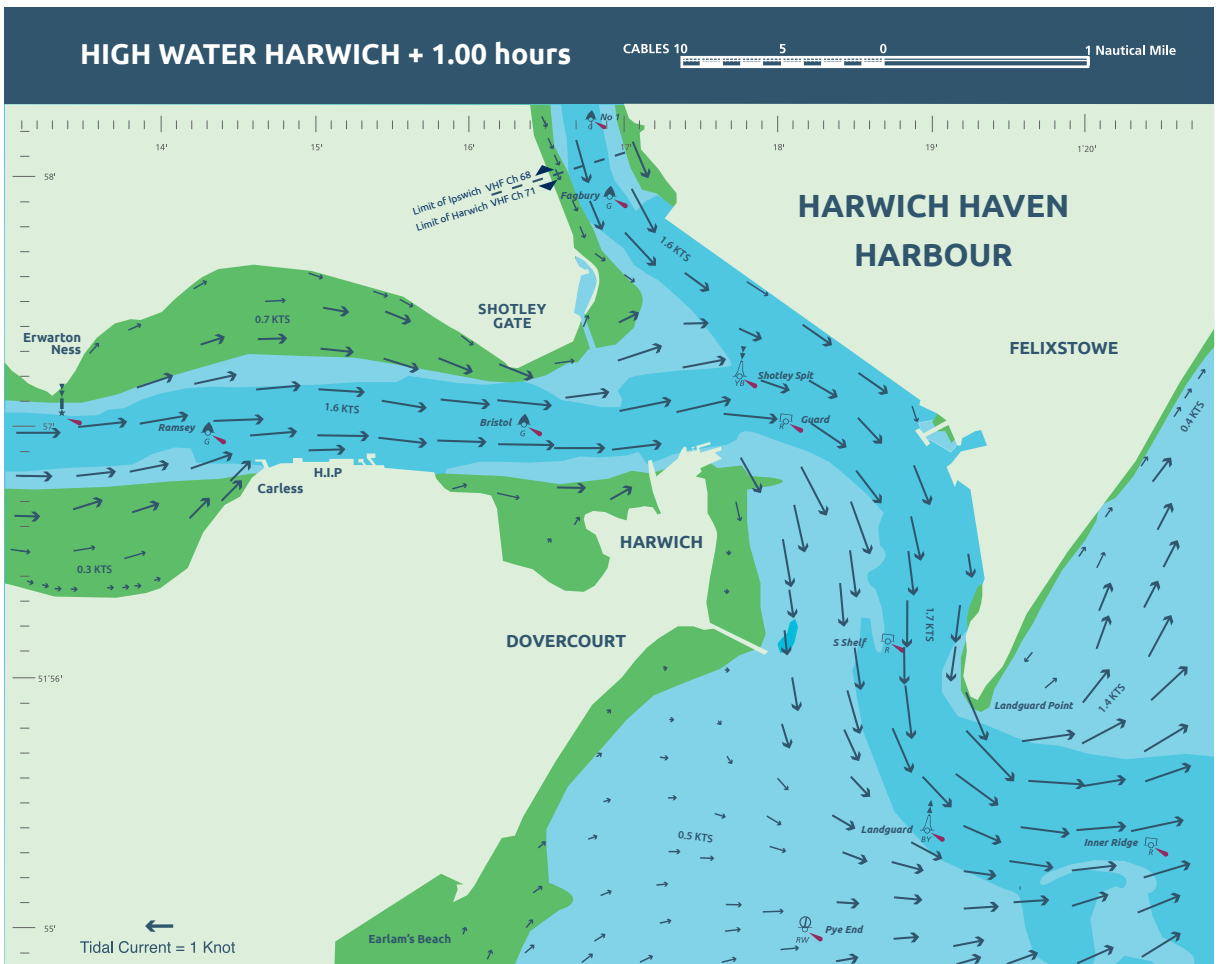
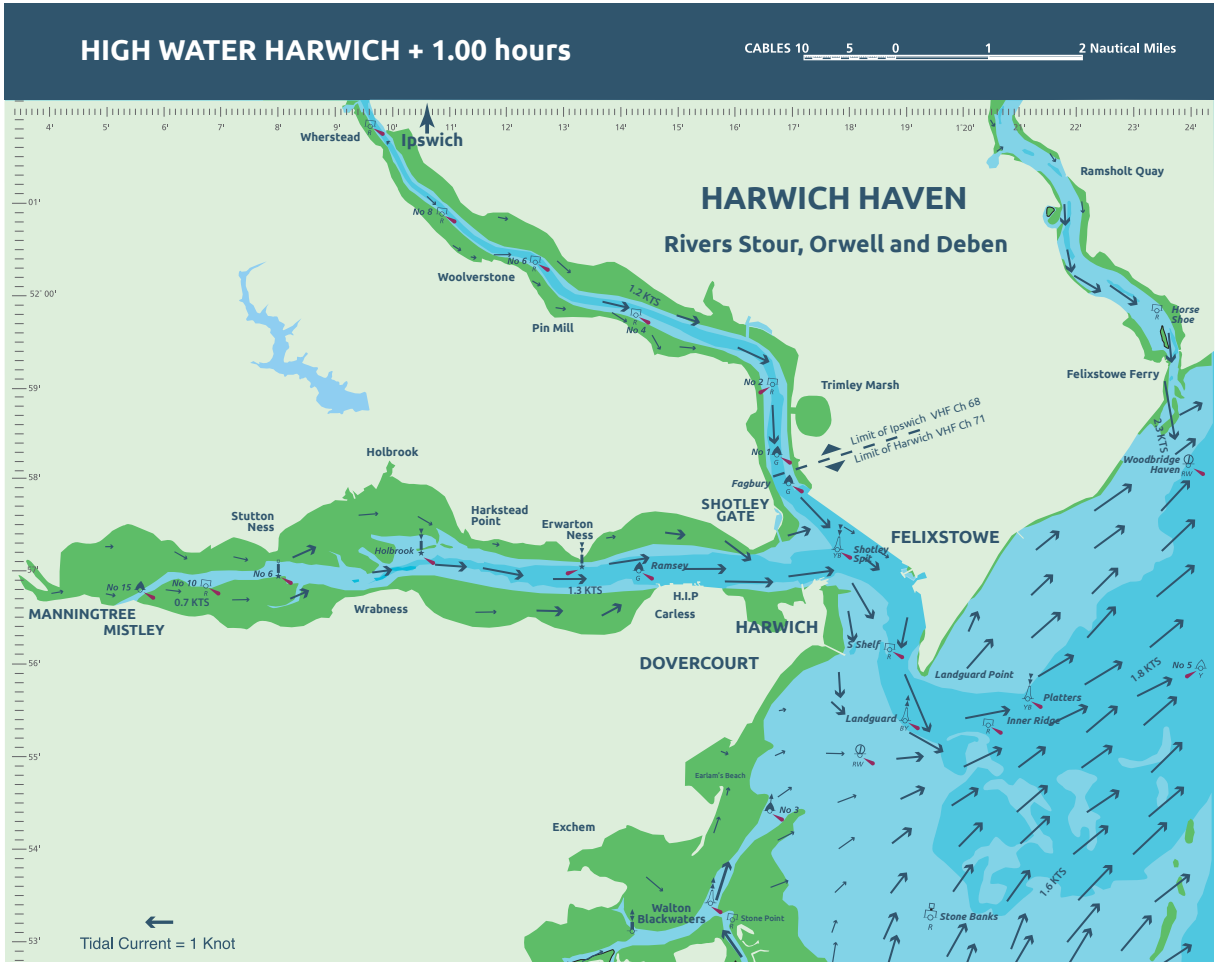
CABLES 10 5 0 1 Nautical Mile

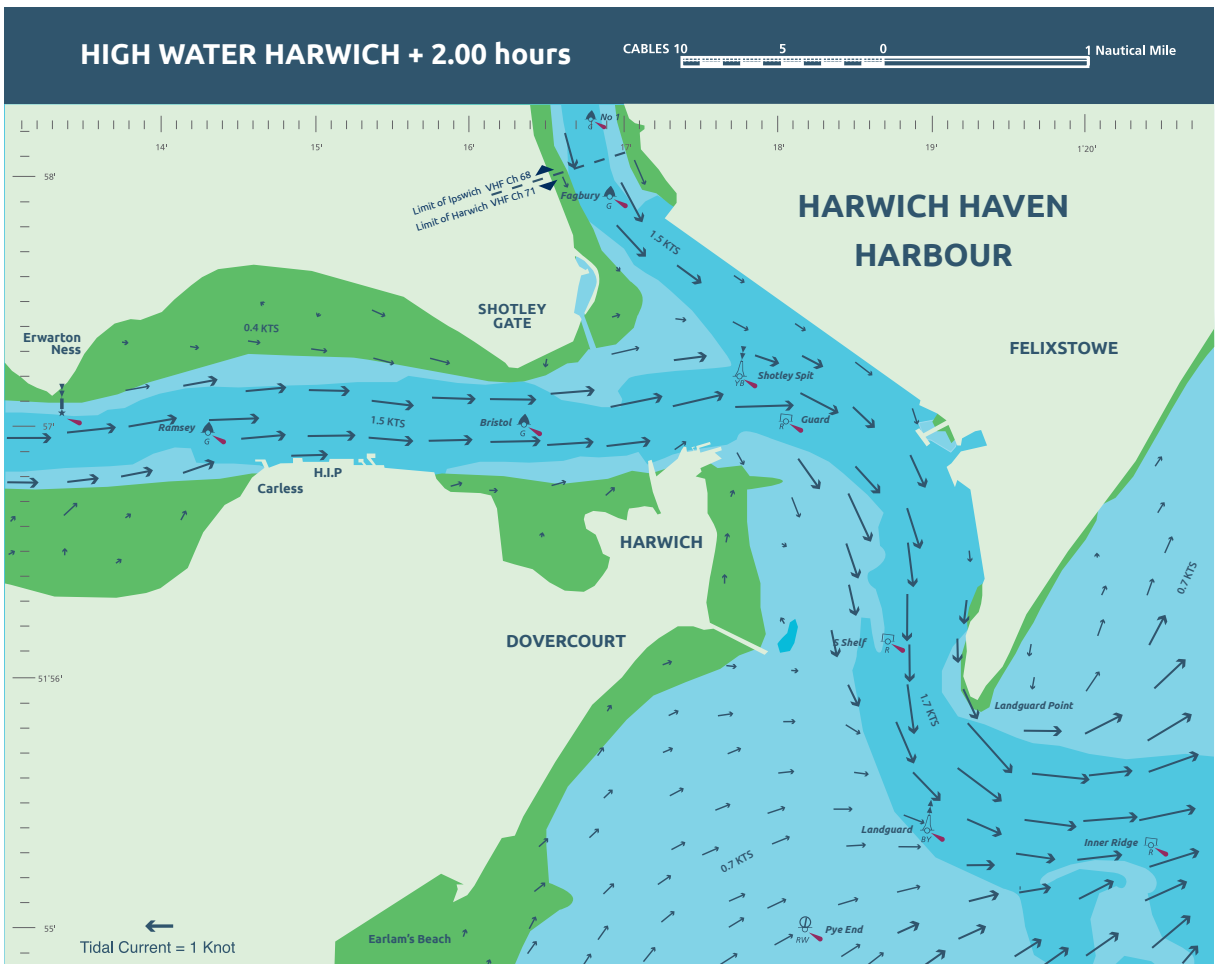
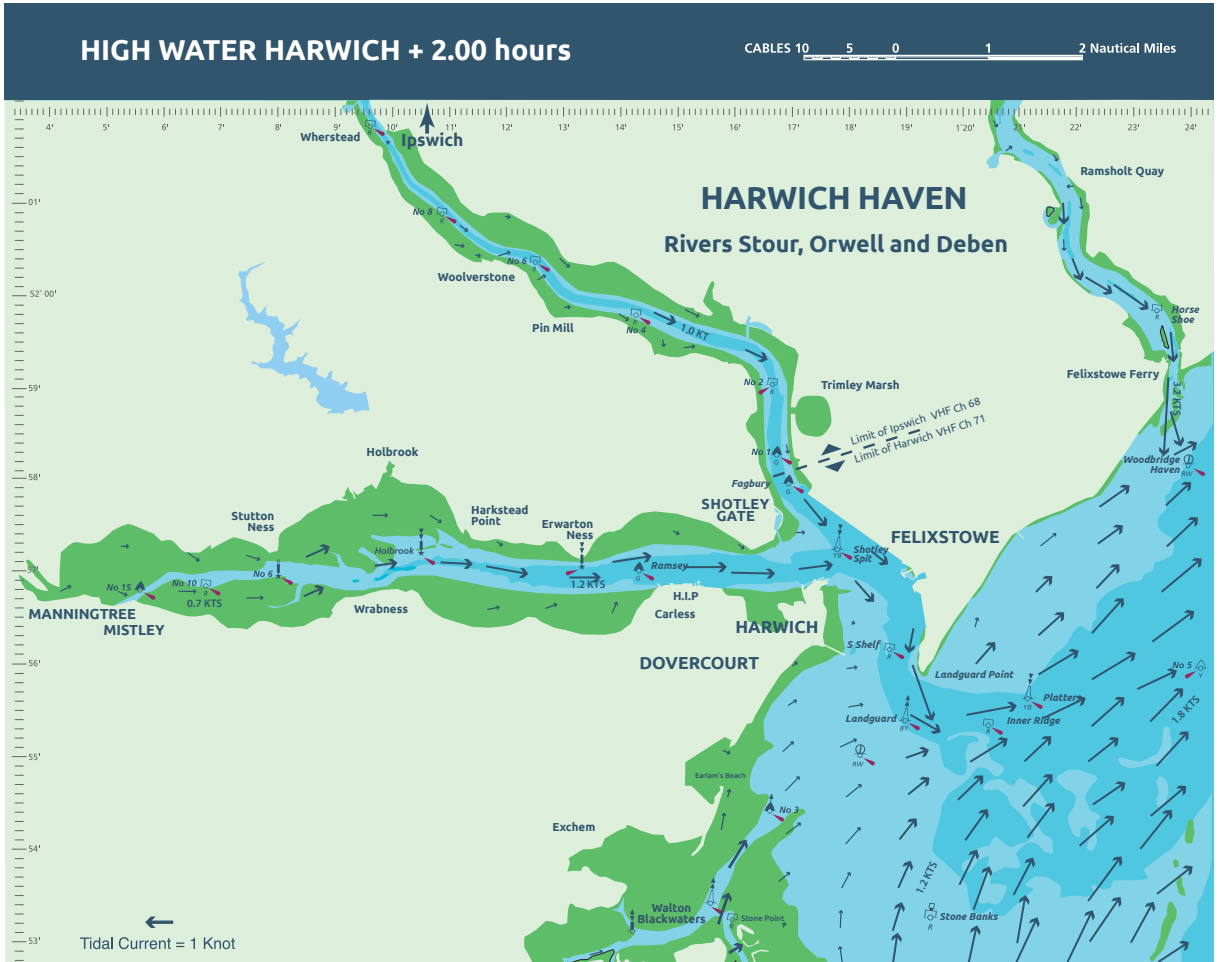
















# HIGH WATER HARWICH + 3.00 hours

CABLES 10 5 0 1 2 Nautical Miles



# HIGH WATER HARWICH + 3.00 hours

CABLES 10 5 0 1 Nautical Mile

